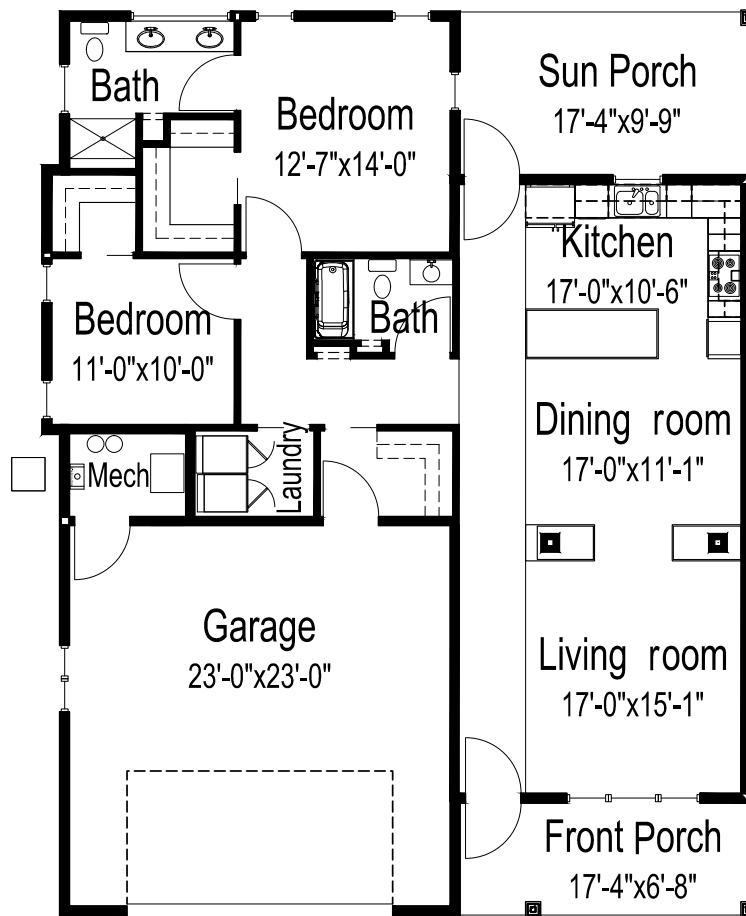


# AUGUSTA PLACE

**Prospera**  
community

a joint venture between  
The Evangelical Lutheran Good Samaritan Society  
and Sanford Health

## Floor plan



### Fairway

### Two bedrooms, two bathrooms

1,422 square feet

(Dimensions and square footage may vary)

301 Lorrain Dr • Bismarck, ND 58503 • (701) 255-1084 • [www.ProsperaCares.com](http://www.ProsperaCares.com)



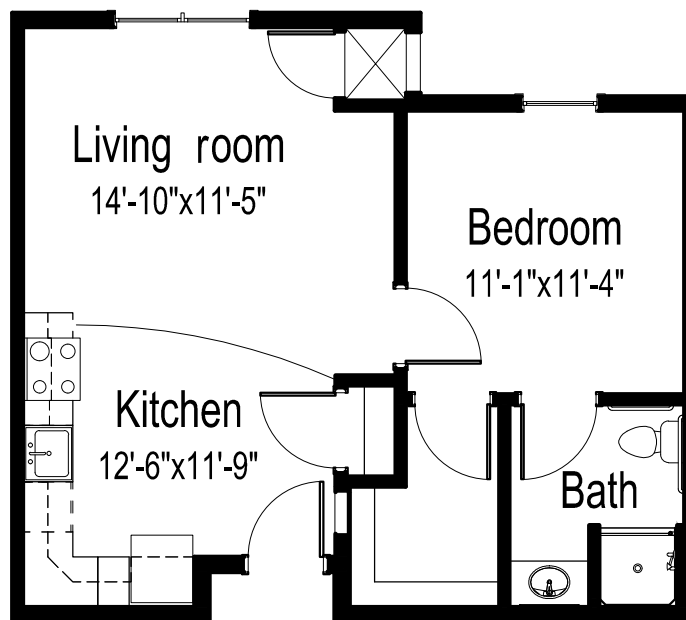
Prospera is a joint venture between The Evangelical Lutheran Good Samaritan Society and Sanford Health. Prospera complies with applicable Federal civil rights laws and does not discriminate against any person on the grounds of race, color, national origin, disability, familial status, religion, sex, age, sexual orientation, gender identity, gender expression, veteran status or other protected statuses except as permitted by applicable law, in admission to, participation in, or receipt of the services and benefits under any of its programs and activities, and in staff and employee assignments to individuals, whether carried out by Prospera directly or through a contractor or any other entity with which Prospera arranges to carry out its programs and activities. All faiths or beliefs are welcome. © 2018 The Evangelical Lutheran Good Samaritan Society. All rights reserved. ATENCIÓN: si habla español, tiene a su disposición servicios gratuitos de asistencia lingüística. Llame al 1-866-477-5343. LUS CEEV: Yog tias koj hais lus Hmoob, cov kev pab txog lus, muaj kev pab dawb rau koj. Hu rau 1-866-477-5343. 183394

# AUGUSTA PLACE

**Prospera**  
community

a joint venture between  
The Evangelical Lutheran Good Samaritan Society  
and Sanford Health

## Floor plan



### Birdie

**One bedroom, one bathroom**

563 square feet

*(Dimensions and square footage may vary)*

**301 Lorrain Dr • Bismarck, ND 58503 • (701) 255-1084 • [www.ProsperaCares.com](http://www.ProsperaCares.com)**



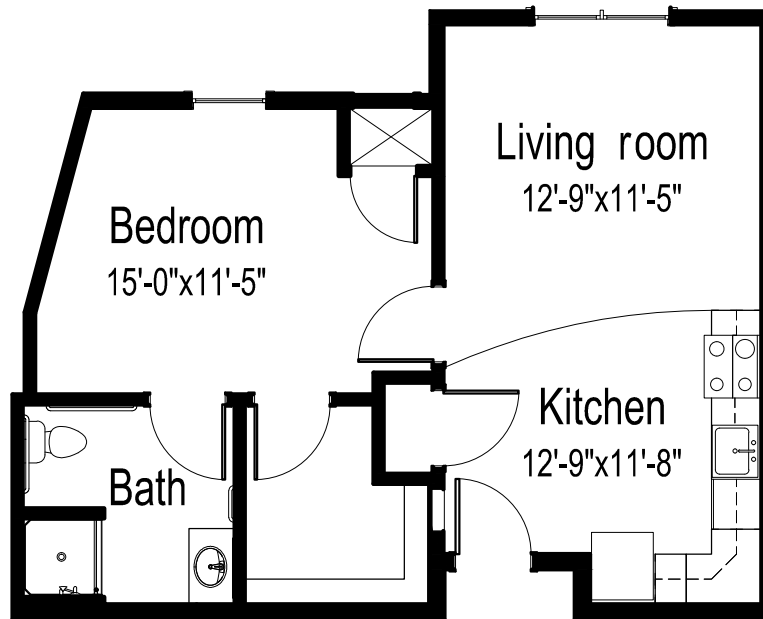
Prospera is a joint venture between The Evangelical Lutheran Good Samaritan Society and Sanford Health. Prospera complies with applicable Federal civil rights laws and does not discriminate against any person on the grounds of race, color, national origin, disability, familial status, religion, sex, age, sexual orientation, gender identity, gender expression, veteran status or other protected statuses except as permitted by applicable law, in admission to, participation in, or receipt of the services and benefits under any of its programs and activities, and in staff and employee assignments to individuals, whether carried out by Prospera directly or through a contractor or any other entity with which Prospera arranges to carry out its programs and activities. All faiths or beliefs are welcome. © 2018 The Evangelical Lutheran Good Samaritan Society. All rights reserved. ATENCIÓN: si habla español, tiene a su disposición servicios gratuitos de asistencia lingüística. Llame al 1-866-477-5343. LUS CEEV: Yog tias koj hais lus Hmoob, cov kev pab txog lus, muaj kev pab dawb rau koj. Hu rau 1-866-477-5343. 183394

# AUGUSTA PLACE

a Prospera  
community

a joint venture between  
The Evangelical Lutheran Good Samaritan Society  
and Sanford Health

## Floor plan



### Eagle

One bedroom, one bathroom

600 square feet

*(Dimensions and square footage may vary)*

301 Lorrain Dr • Bismarck, ND 58503 • (701) 255-1084 • [www.ProspereCares.com](http://www.ProspereCares.com)



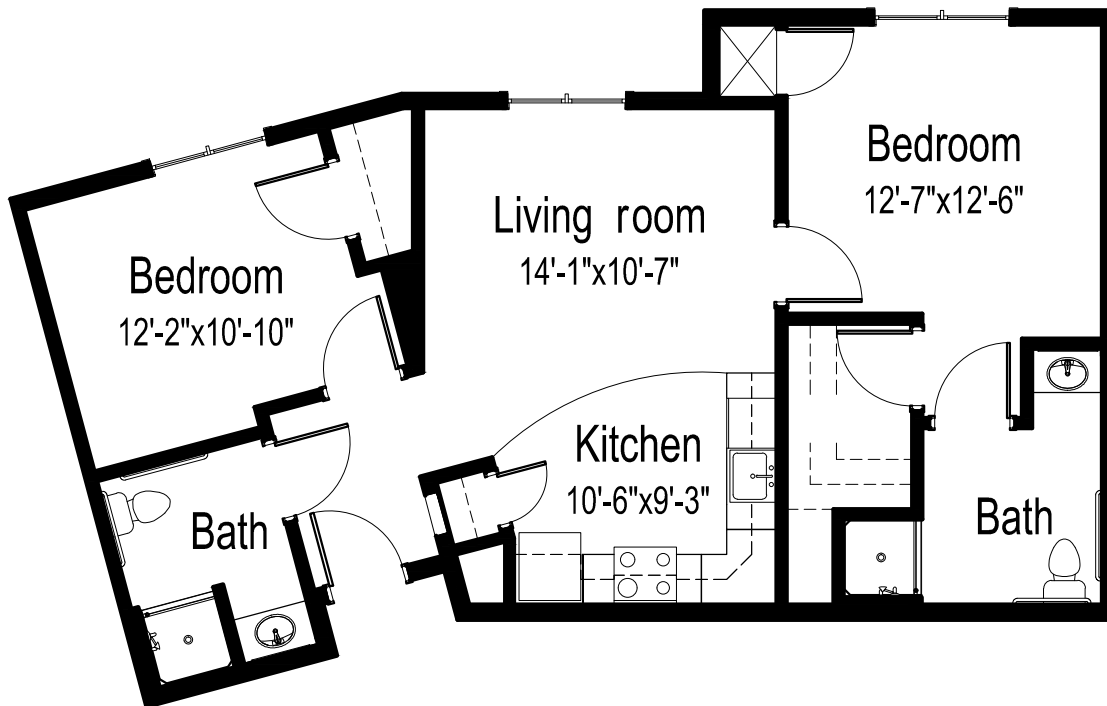
Prospera is a joint venture between The Evangelical Lutheran Good Samaritan Society and Sanford Health. Prospera complies with applicable Federal civil rights laws and does not discriminate against any person on the grounds of race, color, national origin, disability, familial status, religion, sex, age, sexual orientation, gender identity, gender expression, veteran status or other protected statuses except as permitted by applicable law, in admission to, participation in, or receipt of the services and benefits under any of its programs and activities, and in staff and employee assignments to individuals, whether carried out by Prospera directly or through a contractor or any other entity with which Prospera arranges to carry out its programs and activities. All faiths or beliefs are welcome. © 2018 The Evangelical Lutheran Good Samaritan Society. All rights reserved. ATENCIÓN: si habla español, tiene a su disposición servicios gratuitos de asistencia lingüística. Llame al 1-866-477-5343. LUS CEEV: Yog tias koj hais lus Hmoob, cov kev pab txog lus, muaj kev pab dawb rau koj. Hu rau 1-866-477-5343. 183394

# AUGUSTA PLACE

a Prospera  
community

a joint venture between  
The Evangelical Lutheran Good Samaritan Society  
and Sanford Health

## Floor plan



**Double eagle**  
**Two bedrooms, two bathroom**  
864 square feet  
(Dimensions and square footage may vary)

301 Lorrain Dr • Bismarck, ND 58503 • (701) 255-1084 • [www.ProsperaCares.com](http://www.ProsperaCares.com)



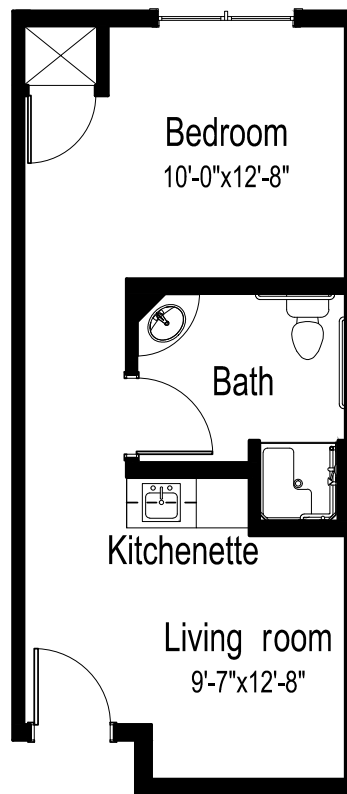
Prospera is a joint venture between The Evangelical Lutheran Good Samaritan Society and Sanford Health. Prospera complies with applicable Federal civil rights laws and does not discriminate against any person on the grounds of race, color, national origin, disability, familial status, religion, sex, age, sexual orientation, gender identity, gender expression, veteran status or other protected statuses except as permitted by applicable law, in admission to, participation in, or receipt of the services and benefits under any of its programs and activities, and in staff and employee assignments to individuals, whether carried out by Prospera directly or through a contractor or any other entity with which Prospera arranges to carry out its programs and activities. All faiths or beliefs are welcome. © 2018 The Evangelical Lutheran Good Samaritan Society. All rights reserved. ATENCIÓN: si habla español, tiene a su disposición servicios gratuitos de asistencia lingüística. Llame al 1-866-477-5343. LUS CEEV: Yog tias koj hais lus Hmoob, cov kev pab txog lus, muaj kev pab dawb rau koj. Hu rau 1-866-477-5343. 183394

# AUGUSTA PLACE

**Prospera**  
community

a joint venture between  
The Evangelical Lutheran Good Samaritan Society  
and Sanford Health

## Basic care suite



### Green Studio

368 square feet

*(Dimensions and square footage may vary)*

**301 Lorrain Dr • Bismarck, ND 58503 • (701) 255-1084 • [www.ProsperaCares.com](http://www.ProsperaCares.com)**



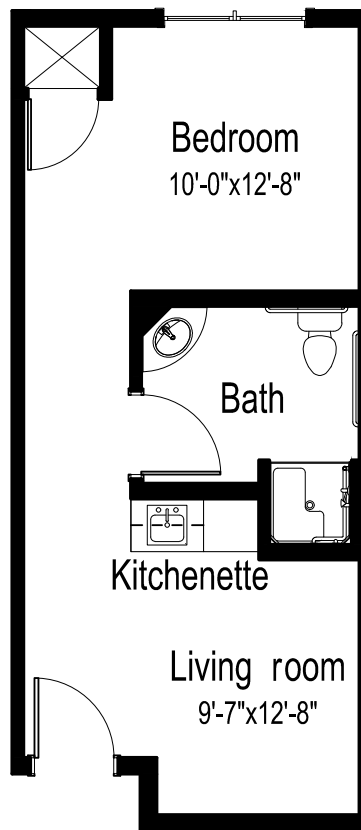
Prospera is a joint venture between The Evangelical Lutheran Good Samaritan Society and Sanford Health. Prospera complies with applicable Federal civil rights laws and does not discriminate against any person on the grounds of race, color, national origin, disability, familial status, religion, sex, age, sexual orientation, gender identity, gender expression, veteran status or other protected statuses except as permitted by applicable law, in admission to, participation in, or receipt of the services and benefits under any of its programs and activities, and in staff and employee assignments to individuals, whether carried out by Prospera directly or through a contractor or any other entity with which Prospera arranges to carry out its programs and activities. All faiths or beliefs are welcome. © 2018 The Evangelical Lutheran Good Samaritan Society. All rights reserved. ATENCIÓN: si habla español, tiene a su disposición servicios gratuitos de asistencia lingüística. Llame al 1-866-477-5343. LUS CEEV: Yog tias koj hais lus Hmoob, cov kev pab txog lus, muaj kev pab dawb rau koj. Hu rau 1-866-477-5343. 183394

# AUGUSTA PLACE

**Prospera**  
community

a joint venture between  
The Evangelical Lutheran Good Samaritan Society  
and Sanford Health

## Basic care suite



### Fringe Studio

387 square feet

*(Dimensions and square footage may vary)*

**301 Lorrain Dr • Bismarck, ND 58503 • (701) 255-1084 • [www.ProsperaCares.com](http://www.ProsperaCares.com)**



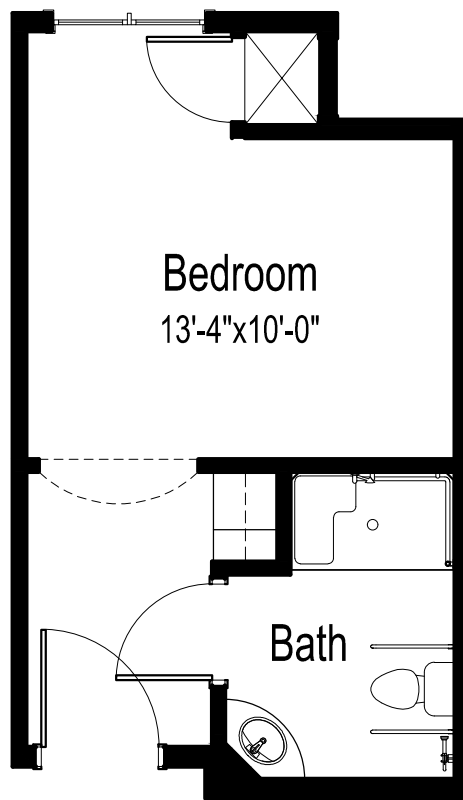
Prospera is a joint venture between The Evangelical Lutheran Good Samaritan Society and Sanford Health. Prospera complies with applicable Federal civil rights laws and does not discriminate against any person on the grounds of race, color, national origin, disability, familial status, religion, sex, age, sexual orientation, gender identity, gender expression, veteran status or other protected statuses except as permitted by applicable law, in admission to, participation in, or receipt of the services and benefits under any of its programs and activities, and in staff and employee assignments to individuals, whether carried out by Prospera directly or through a contractor or any other entity with which Prospera arranges to carry out its programs and activities. All faiths or beliefs are welcome. © 2018 The Evangelical Lutheran Good Samaritan Society. All rights reserved. ATENCIÓN: si habla español, tiene a su disposición servicios gratuitos de asistencia lingüística. Llame al 1-866-477-5343. LUS CEEV: Yog tias koj hais lus Hmoob, cov kev pab txog lus, muaj kev pab dawb rau koj. Hu rau 1-866-477-5343. 183394

# AUGUSTA PLACE

**Prospera**  
community

a joint venture between  
The Evangelical Lutheran Good Samaritan Society  
and Sanford Health

## Floor plan



### Wedge Private

292 square feet

*(Dimensions and square footage may vary)*

**301 Lorrain Dr • Bismarck, ND 58503 • (701) 255-1084 • [www.ProsperaCares.com](http://www.ProsperaCares.com)**



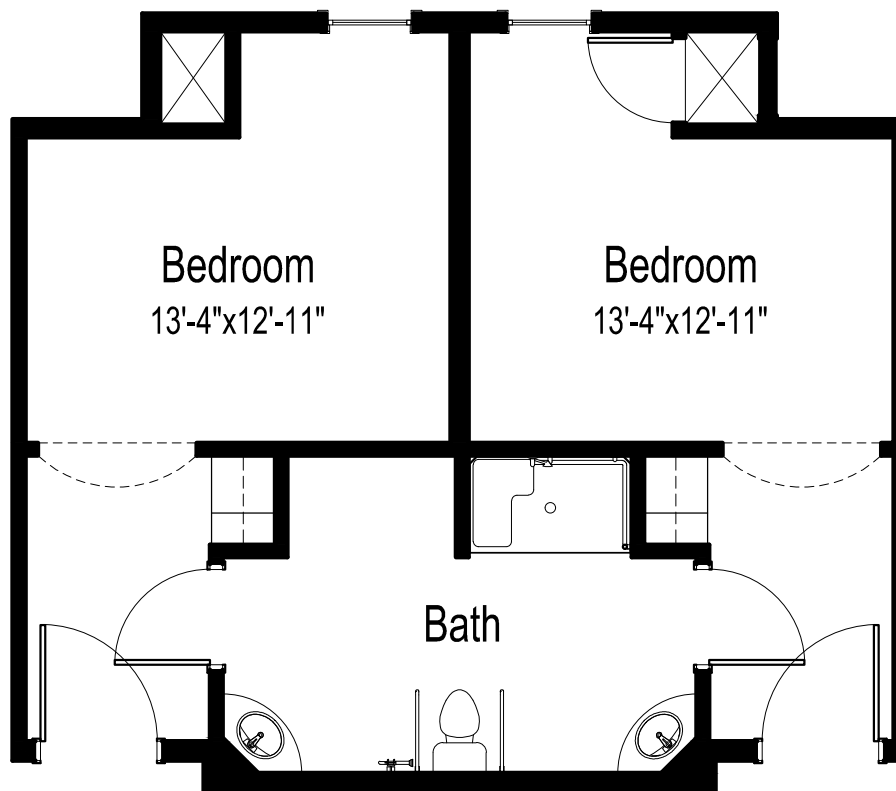
Prospera is a joint venture between The Evangelical Lutheran Good Samaritan Society and Sanford Health. Prospera complies with applicable Federal civil rights laws and does not discriminate against any person on the grounds of race, color, national origin, disability, familial status, religion, sex, age, sexual orientation, gender identity, gender expression, veteran status or other protected statuses except as permitted by applicable law, in admission to, participation in, or receipt of the services and benefits under any of its programs and activities, and in staff and employee assignments to individuals, whether carried out by Prospera directly or through a contractor or any other entity with which Prospera arranges to carry out its programs and activities. All faiths or beliefs are welcome. © 2018 The Evangelical Lutheran Good Samaritan Society. All rights reserved. ATENCIÓN: si habla español, tiene a su disposición servicios gratuitos de asistencia lingüística. Llame al 1-866-477-5343. LUS CEEV: Yog tias koj hais lus Hmoob, cov kev pab txog lus, muaj kev pab dawb rau koj. Hu rau 1-866-477-5343. 183394

# AUGUSTA PLACE

**Prospera**  
community

a joint venture between  
The Evangelical Lutheran Good Samaritan Society  
and Sanford Health

## Floor plan



**Wood**  
**Semi-private**

595 square feet

*(Dimensions and square footage may vary)*

**301 Lorrain Dr • Bismarck, ND 58503 • (701) 255-1084 • [www.ProsperaCares.com](http://www.ProsperaCares.com)**



Prospera is a joint venture between The Evangelical Lutheran Good Samaritan Society and Sanford Health. Prospera complies with applicable Federal civil rights laws and does not discriminate against any person on the grounds of race, color, national origin, disability, familial status, religion, sex, age, sexual orientation, gender identity, gender expression, veteran status or other protected statuses except as permitted by applicable law, in admission to, participation in, or receipt of the services and benefits under any of its programs and activities, and in staff and employee assignments to individuals, whether carried out by Prospera directly or through a contractor or any other entity with which Prospera arranges to carry out its programs and activities. All faiths or beliefs are welcome. © 2018 The Evangelical Lutheran Good Samaritan Society. All rights reserved. ATENCIÓN: si habla español, tiene a su disposición servicios gratuitos de asistencia lingüística. Llame al 1-866-477-5343. LUS CEEV: Yog tias koj hais lus Hmoob, cov kev pab txog lus, muaj kev pab dawb rau koj. Hu rau 1-866-477-5343. 183394