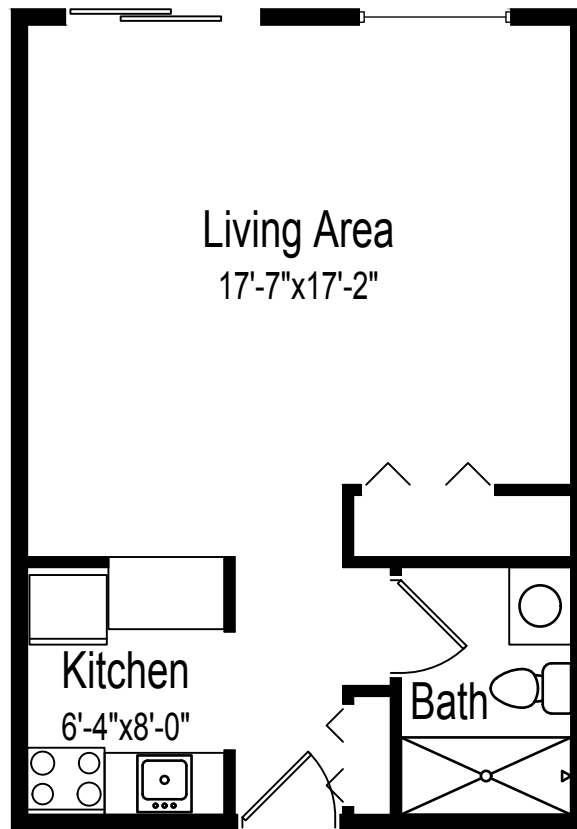




Prospera
community
a joint venture between
The Evangelical Lutheran Good Samaritan Society
and Sanford Health

Floor plan



Studio

450 square feet

(Dimensions and square footage may vary)

1016 N 28th St • Bismarck, ND 58501 • (701) 323-1871 • www.ProsperaCares.com

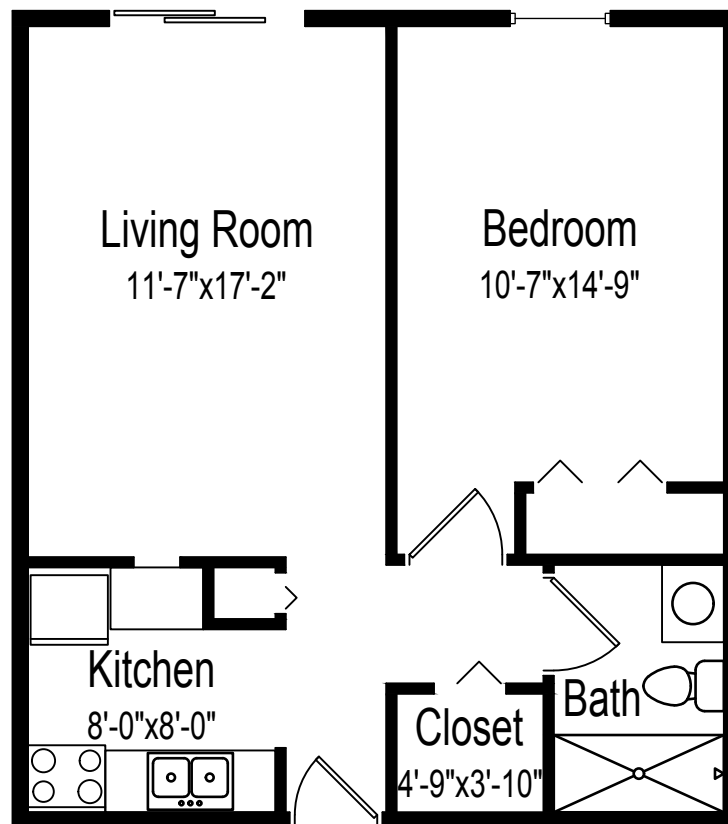


Prospera is a joint venture between The Evangelical Lutheran Good Samaritan Society and Sanford Health. Prospera complies with applicable Federal civil rights laws and does not discriminate against any person on the grounds of race, color, national origin, disability, familial status, religion, sex, age, sexual orientation, gender identity, gender expression, veteran status or other protected statuses except as permitted by applicable law, in admission to, participation in, or receipt of the services and benefits under any of its programs and activities, and in staff and employee assignments to individuals, whether carried out by Prospera directly or through a contractor or any other entity with which Prospera arranges to carry out its programs and activities. All faiths or beliefs are welcome. © 2018 The Evangelical Lutheran Good Samaritan Society. All rights reserved. ATENCION: si habla español, tiene a su disposición servicios gratuitos de asistencia lingüística. Llame al 1-866-477-5343. LUS CEEV: Yog tias koj hais lus Hmoob, cov kev pab txog lus, muaj kev pab dawb rau koj. Hu rau 1-866-477-5343. 181203



Prospera
community
a joint venture between
The Evangelical Lutheran Good Samaritan Society
and Sanford Health

Floor plan



One bedroom, one bathroom

575 square feet

(Dimensions and square footage may vary)

1016 N 28th St • Bismarck, ND 58501 • (701) 323-1871 • www.ProsperaCares.com

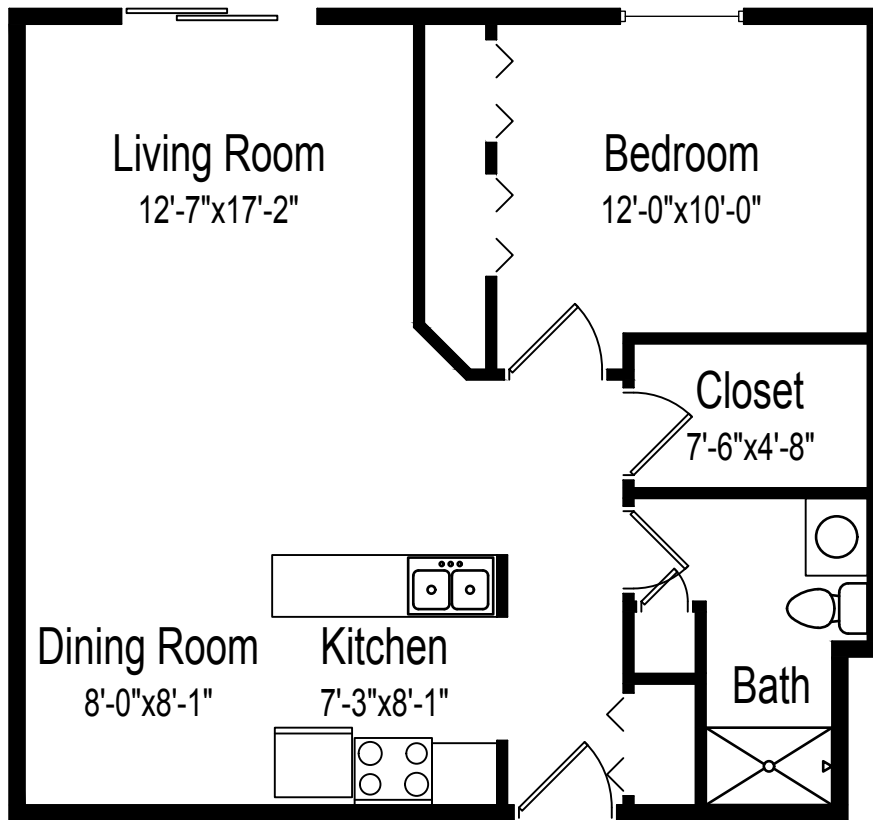


Prospera is a joint venture between The Evangelical Lutheran Good Samaritan Society and Sanford Health. Prospera complies with applicable Federal civil rights laws and does not discriminate against any person on the grounds of race, color, national origin, disability, familial status, religion, sex, age, sexual orientation, gender identity, gender expression, veteran status or other protected statuses except as permitted by applicable law, in admission to, participation in, or receipt of the services and benefits under any of its programs and activities, and in staff and employee assignments to individuals, whether carried out by Prospera directly or through a contractor or any other entity with which Prospera arranges to carry out its programs and activities. All faiths or beliefs are welcome. © 2018 The Evangelical Lutheran Good Samaritan Society. All rights reserved. ATENCION: si habla español, tiene a su disposición servicios gratuitos de asistencia lingüística. Llame al 1-866-477-5343. LUS CEEV: Yog tias koj hais lus Hmoob, cov kev pab txog lus, muaj kev pab dawb rau koj. Hu rau 1-866-477-5343. 181203



Prospera
community
a joint venture between
The Evangelical Lutheran Good Samaritan Society
and Sanford Health

Floor plan



One bedroom, one bathroom

750 square feet

(Dimensions and square footage may vary)

1016 N 28th St • Bismarck, ND 58501 • (701) 323-1871 • www.ProsperaCares.com

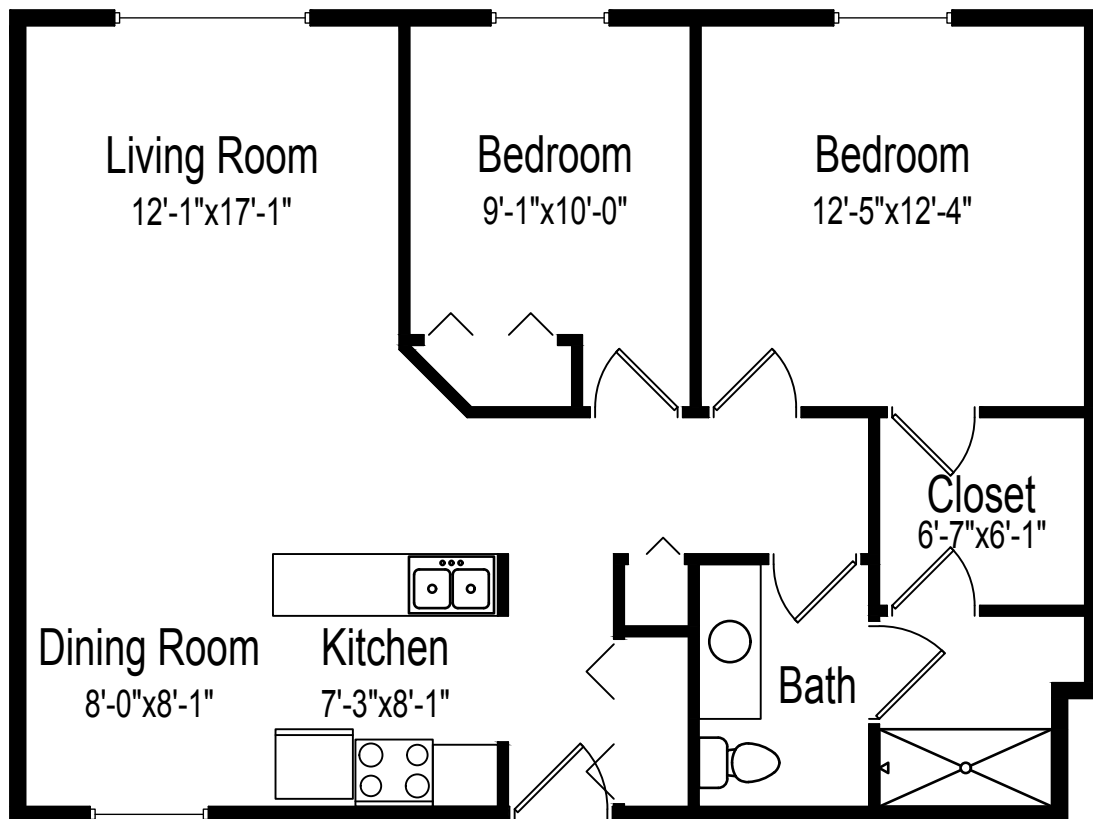


Prospera is a joint venture between The Evangelical Lutheran Good Samaritan Society and Sanford Health. Prospera complies with applicable Federal civil rights laws and does not discriminate against any person on the grounds of race, color, national origin, disability, familial status, religion, sex, age, sexual orientation, gender identity, gender expression, veteran status or other protected statuses except as permitted by applicable law, in admission to, participation in, or receipt of the services and benefits under any of its programs and activities, and in staff and employee assignments to individuals, whether carried out by Prospera directly or through a contractor or any other entity with which Prospera arranges to carry out its programs and activities. All faiths or beliefs are welcome. © 2018 The Evangelical Lutheran Good Samaritan Society. All rights reserved. ATENCION: si habla español, tiene a su disposición servicios gratuitos de asistencia lingüística. Llame al 1-866-477-5343. LUS CEEV: Yog tias koj hais lus Hmoob, cov kev pab txog lus, muaj kev pab dawb rau koj. Hu rau 1-866-477-5343. 181203



a joint venture between
The Evangelical Lutheran Good Samaritan Society
and Sanford Health

Floor plan



Two bedrooms, one bathroom

900 square feet

(Dimensions and square footage may vary)

1016 N 28th St • Bismarck, ND 58501 • (701) 323-1871 • www.ProsperaCares.com



Prospera is a joint venture between The Evangelical Lutheran Good Samaritan Society and Sanford Health. Prospera complies with applicable Federal civil rights laws and does not discriminate against any person on the grounds of race, color, national origin, disability, familial status, religion, sex, age, sexual orientation, gender identity, gender expression, veteran status or other protected statuses except as permitted by applicable law, in admission to, participation in, or receipt of the services and benefits under any of its programs and activities, and in staff and employee assignments to individuals, whether carried out by Prospera directly or through a contractor or any other entity with which Prospera arranges to carry out its programs and activities. All faiths or beliefs are welcome. © 2018 The Evangelical Lutheran Good Samaritan Society. All rights reserved. ATENCION: si habla español, tiene a su disposición servicios gratuitos de asistencia lingüística. Llame al 1-866-477-5343. LUS CEEV: Yog tias koj hais lus Hmoob, cov kev pab txog lus, muaj kev pab dawb rau koj. Hu rau 1-866-477-5343. 181203